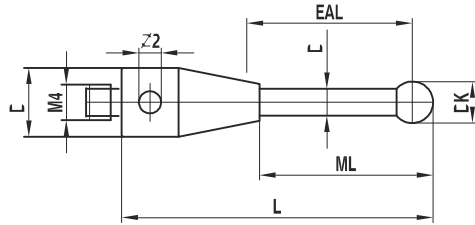


Carbide styli

Thread M4
Material Stainless steel base, carbide stem, ruby ball



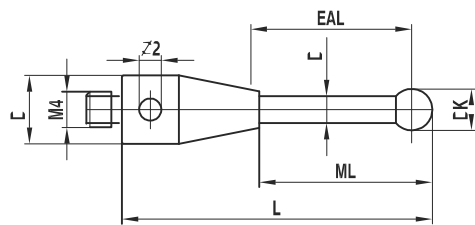
Pos.	itp Order No	analogue Renishaw	Short Desig.	DK	ML1 ML	DG D	L	DS1 DS	EAL B	Weight g
1	TH M4 010 R7 020	A-5003-4792	-	1,0	10,5	7,0	20,5	0,7	10,0	2,4
2	TH M4 020 07 021	A-5003-2932	-	2,0	11,0	7,0	21,0	1,5	10,0	3,0
3	TH M4 020 07 051	A-5003-4797	-	2,0	41,0	7,0	51,0	1,5	40,0	3,8
4	TH M4 030 07 021	A-5003-4793	-	3,0	11,5	7,0	21,5	1,5	10,0	3,5
5	TH M4 030 07 051	A-5003-3680	-	3,0	40,0	7,0	51,5	2,0	38,0	4,9
6	TH M4 040 07 022	A-5003-4794	-	4,0	10,5	7,0	22,0	1,5	10,0	3,5
7	TH M4 040 07 052	A-5003-4799	-	4,0	40,5	7,0	52,0	2,0	38,0	5,0
8	TH M4 050 07 022	A-5003-4795	-	5,0	9,0	7,0	22,5	2,5	6,0	4,5
9	TH M4 050 07 052	A-5003-4800	-	5,0	39,0	7,0	52,5	2,5	36,0	6,7
10	TH M4 060 07 023	A-5003-4796	-	6,0	9,5	7,0	23,0	2,5	6,0	4,7
11	TH M4 060 07 053	A-5003-4801	-	6,0	39,5	7,0	53,0	2,5	36,0	6,9

Peg mounted balls. Special designs on request.

All existing ball materials are available upon request for all styli and all thread sizes.

Ceramic styli

Thread M4
Material Stainless steel base, ceramic stem, ruby ball

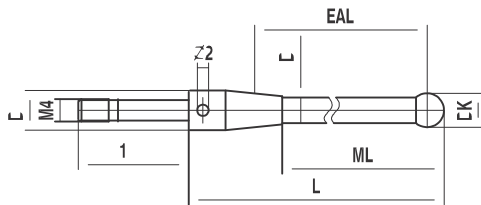


Pos.	itp Order No	analogue Renishaw	Short Desig.	DK	ML1 ML	DG D	L	DS1 DS	EAL B	Weight g
1	TK M4 050 07 052	A-5003-0235	-	5,0	36,0	7,0	52,5	3,5	34,0	5,0
2	TK M4 050 07 077	A-5003-0236	-	5,0	61,0	7,0	77,5	3,5	59,0	5,6
3	TK M4 050 07 102	A-5000-9761	-	5,0	86,0	7,0	102,5	3,5	84,0	6,4
4	TK M4 060 07 053	A-5000-3709	PS3-1C	6,0	36,5	7,0	53,0	4,5	36,0	4,7
5	TK M4 060 S7 053*	A-5000-7098	-	6,0	36,5	7,0	53,0	4,5	36,0	6,0
6	TK M4 060 07 078	A-5003-2764	-	6,0	61,5	7,0	78,0	4,5	63,5	5,6
7	TK M4 060 07 103	A-5000-3712	PS3-2C	6,0	86,5	7,0	103,0	4,5	86,0	6,7
8	TK M4 060 S7 103*	A-5000-6462	-	6,0	86,0	7,0	103,0	4,5	86,0	7,5
9	TK M4 080 07 054	A-5000-7795	PS3-6C	8,0	37,5	7,0	54,0	4,5	50,0	5,1
10	TK M4 080 07 079	A-5003-4802	-	8,0	62,5	7,0	79,0	4,5	75,0	6,2
11	TK M4 080 07 104	A-5000-7796	PS3-7C	8,0	87,5	7,0	104,0	4,5	100,0	6,6

Glued balls. Special designs on request.

All existing ball materials are available upon request for all styli and all thread sizes.

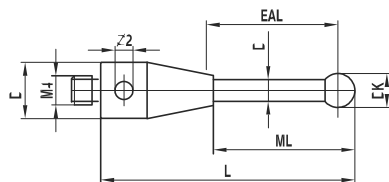
*Suitable only with HI M4 000 15 015.



Ceramic styli with silicon nitride ball

Pos.	itp Order No	analogue Renishaw	Short Desig.	DK	ML1 ML	DG D	L	DS1 DS	EAL B	Weight g
1	TK M4 S60 07 053	-	-	6,0	36,5	7,0	53,0	4,5	36,0	4,7
2	TK M4 S60 07 103	-	-	6,0	86,5	7,0	103,0	4,5	86,0	6,7
3	TK M4 S80 07 054	-	-	8,0	37,5	7,0	54,0	4,5	50,0	5,1
4	TK M4 S80 07 104	-	-	8,0	87,5	7,0	104,0	4,5	100,0	6,6

Thread M4
Material Stainless steel base, ceramic stem, silicon nitride ball



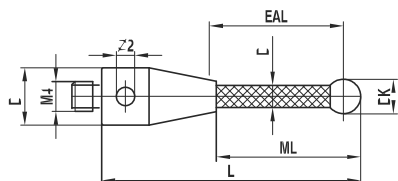
Glued balls. Special designs on request.

All existing ball materials are available upon request for all styli and all thread sizes.

Carbon fibre styli thermostable

Pos.	itp Order No	analogue Renishaw	Short Desig.	DK	ML1 ML	DG D	L	DS1 DS	EAL B	Weight g
1	TC M4 060 07 053	A-5003-1436	-	6,0	36,5	7,0	53,0	4,5	36,0	5,1
2	TC M4 060 07 103	A-5003-1358	-	6,0	86,5	7,0	103,0	4,5	86,0	6,2
3	TC M4 060 07 153	A-5003-1255	-	6,0	136,5	7,0	153,0	4,5	138,5	7,5
4	TC M4 060 07 203	A-5003-1075	-	6,0	186,5	7,0	203,0	4,5	186,0	8,7
5	TC M4 060 07 303	A-5003-4179	-	6,0	286,5	7,0	303,0	4,5	288,5	10,4

Thread M4
Material Stainless steel base, carbon fibre stem thermostable, ruby ball



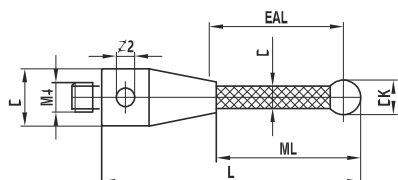
Peg mounted balls. Thermostable carbon fibre, E-module of approximately 450 GPa. Special designs on request.

All existing ball materials are available upon request for all styli and all thread sizes.

Carbon fibre styli thermostable with silicon nitride ball

Pos.	itp Order No	analogue Renishaw	Short Desig.	DK	ML1 ML	DG D	L	DS1 DS	EAL B	Weight g
1	TC M4 S60 07 053	A-5003-5730	-	6,0	36,5	7,0	53,0	4,5	36,0	5,1
2	TC M4 S60 07 103	A-5003-5731	-	6,0	86,5	7,0	103,0	4,5	86,0	6,2
3	TC M4 S60 07 153	-	-	6,0	136,5	7,0	153,0	4,5	138,5	7,5
4	TC M4 S60 07 203	-	-	6,0	186,5	7,0	203,0	4,5	186,0	8,7
5	TC M4 S60 07 303	-	-	6,0	286,5	7,0	303,0	4,5	288,5	10,4

Thread M4
Material Stainless steel base, carbon fibre stem thermostable, silicon nitride ball



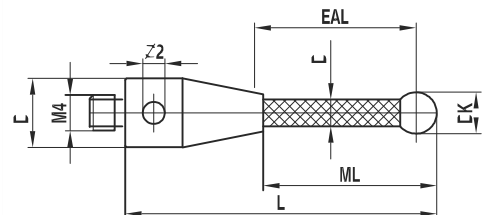
Peg mounted balls. Thermostable carbon fibre, E-module of approximately 450 GPa. Special designs on request.

All existing ball materials are available upon request for all styli and all thread sizes.

Carbon fibre styli, thermostable with zirconium oxide ball

Pos.	itp Order No	analogue Renishaw	Short Desig.	DK	ML1 ML	DG D	L	DS1 DS	EAL B	Weight g
1	TC M4 Z60 07 053	A-5003-5744	-	6,0	36,5	7,0	53,0	4,5	36,0	5,1
2	TC M4 Z60 07 103	A-5003-5745	-	6,0	86,5	7,0	103,0	4,5	86,0	6,2
3	TC M4 Z60 07 153	-	-	6,0	136,5	7,0	153,0	4,5	138,5	7,5
4	TC M4 Z60 07 203	-	-	6,0	186,5	7,0	203,0	4,5	186,0	8,7
5	TC M4 Z60 07 303	-	-	6,0	286,5	7,0	303,0	4,5	288,5	10,4

Thread M4
Material Stainless steel base, carbon fibre stem thermostable, zirconium oxide ball



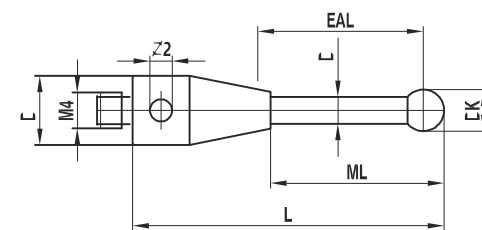
Peg mounted balls. Thermostable carbon fibre, E-module of approximately 450 GPa. Special designs on request.

All existing ball materials are available upon request for all styli and all thread sizes.

Steel styli

Pos.	itp Order No	analogue Renishaw	Short Desig.	DK	ML1 ML	DG D	L	DS1 DS	EAL B	Weight g
1	TI M4 010 07 020	A-5000-7545	PS2-3R	1,0	4,5	7,0	20,0	0,7	4,0	2,5
2	TI M4 020 07 020	A-5000-7547	PS2-4R	2,0	9,0	7,0	20,0	1,3	8,0	2,3
3	TI M4 030 07 020	A-5000-7549	PS2-5R	3,0	14,5	7,0	20,0	2,0 - 3,0	13,0	2,0
4	TI M4 040 07 020	A-5000-7551	PS2-6R	4,0	15,0	7,0	20,0	3,0	13,0	2,1
5	TI M4 050 07 013	A-5003-3550	-	5,0	9,0	7,0	13,0	3,5	5,5	2,0
6	TI M4 050 07 020	A-5000-7553	PS2-7R	5,0	16,0	7,0	20,0	3,5	13,5	2,3
7	TI M4 050 07 022	A-5000-6731	PS2-22R	5,0	17,5	7,0	22,5	3,0	16,0	2,4
8	TI M4 050 07 032	A-5000-6352	-	5,0	27,5	7,0	32,5	3,0	26,0	3,0
9	TI M4 050 07 052	A-5000-7521	PS3-1R	5,0	35,5	7,0	52,5	4,5	33,0	5,8
10	TI M4 050 07 102	A-5000-7522	PS3-2R	5,0	85,5	7,0	102,5	4,5	83,0	11,3
11	TI M4 050 07 152	A-5000-7523	-	5,0	135,5	7,0	152,5	4,5	133,0	18,2
12	TI M4 060 07 020	A-5000-7555	PS2-8R	6,0	16,0	7,0	20,0	4,5	13,5	3,0
13	TI M4 080 07 020	A-5000-7557	PS2-9R	8,0	16,5	7,0	20,0	6,0	16,0	3,9

Thread M4
Material Stainless steel base and stem, ruby ball



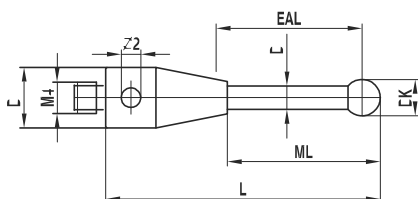
Peg mounted balls. Special designs on request.

All existing ball materials are available upon request for all styli and all thread sizes.

Steel styli with silicon nitride ball

Pos.	itp Order No	analogue Renishaw	Short Desig.	DK	ML1 ML	DG D	L	DS1 DS	EAL B	Weight g
1	TI M4 S10 07 020	-	-	1,0	4,5	7,0	20,0	0,7	4,0	2,5
2	TI M4 S20 07 020	A-5003-5728	-	2,0	9,0	7,0	20,0	1,3	8,0	2,3
3	TI M4 S30 07 020	-	-	3,0	14,5	7,0	20,0	2,0 - 3,0	13,0	2,0
4	TI M4 S40 07 020	A-5003-5729	-	4,0	15,0	7,0	20,0	3,0	13,0	2,1
5	TI M4 S50 07 020	-	-	5,0	16,0	7,0	20,0	3,5	13,5	2,3
6	TI M4 S50 07 022	-	-	5,0	17,5	7,0	22,5	3,0	16,0	2,4
7	TI M4 S50 07 052	-	-	5,0	35,5	7,0	52,5	4,5	33,0	5,8
8	TI M4 S50 07 102	-	-	5,0	85,5	7,0	102,5	4,5	83,0	11,3
9	TI M4 S60 07 020	-	-	6,0	16,0	7,0	20,0	4,5	13,5	3,0
10	TI M4 S80 07 020	-	-	8,0	16,5	7,0	20,0	6,0	16,0	3,9

Thread M4
Material Stainless steel base and stem, silicon nitride ball



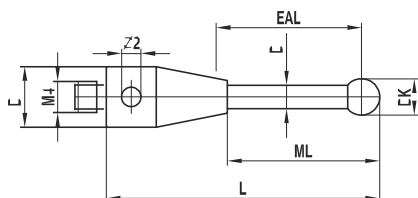
Peg mounted balls. Special designs on request.

All existing ball materials are available upon request for all styli and all thread sizes.

Steel styli with zirconium oxide ball

Pos.	itp Order No	analogue Renishaw	Short Desig.	DK	ML1 ML	DG D	L	DS1 DS	EAL B	Weight g
1	TI M4 Z20 07 020	A-5003-5742	-	2,0	9,0	7,0	20,0	1,3	8,0	2,3
2	TI M4 Z40 07 020	A-5003-5743	-	4,0	15,0	7,0	20,0	3,0	13,0	2,1

Thread M4
Material Stainless steel base and stem, zirconium oxide ball



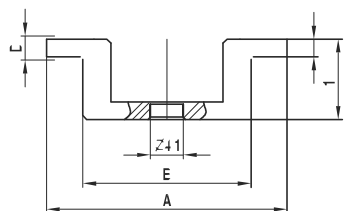
Peg mounted balls. Special designs on request.

All existing ball materials are available upon request for all styli and all thread sizes.

Disk styli with two hemispherical balls

Pos.	itp Order No	analogue Renishaw	Short Desig.	DK	ML1 ML	C D	L	DS1 DS	A B	Weight g
1	KI M4 022 30 021	A-5000-7596	-			2,2 / 3,0			21,0 / 30,0	8,0
2	KI M4 022 35 021	A-5000-7597	-			2,2 / 3,0			21,0 / 35,0	9,5
3	KI M4 030 50 023	A-5000-7598	-			3,0 / 4,0			23,0 / 50,0	13,5

Thread M4
Material Stainless steel



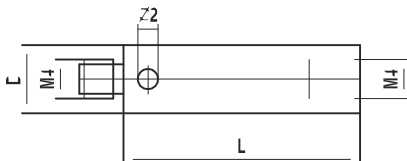
Special designs on request.

Extension

Pos.	itp Order No	analogue Renishaw	Short Desig.	DK	ML1 ML	DG D	L	DS1 DS	EAL B	Weight g
1	VI M4 000 07 010	M-5000-7583	SE-9			7,0	10,0			2,4
2	VI M4 000 07 015	M-5000-7584	SE-10			7,0	15,0			3,7
3	VI M4 000 07 020	M-5000-7585	SE-11			7,0	20,0			4,8
4	VI M4 000 07 030	M-5000-7586	SE-12			7,0	30,0			7,4

Thread M4
Material Stainless steel

Special designs on request.

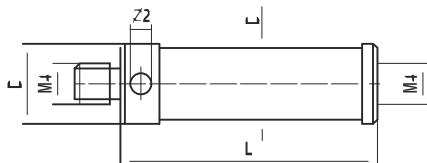


Extension

Pos.	itp Order No	analogue Renishaw	Short Desig.	DK	ML1 ML	DG D	L	DS1 DS	EAL B	Weight g
1	VK M4 000 07 030	A-5000-7754	SE-19			7,0	30,0			5,1
2	VK M4 000 07 050	A-5000-7755	SE-20			7,0	50,0			6,7
3	VK M4 000 07 100	A-5000-7727	SE-30			7,0	100,0			10,6

Thread M4
Material Ceramic, stainless steel ends

Special designs on request.

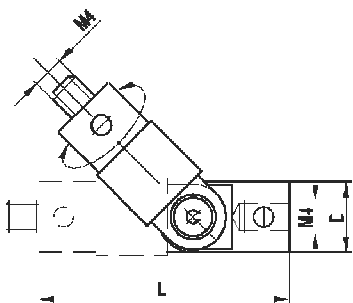


Rotary knuckle, slewing range 360°, swing range 180°

Pos.	itp Order No	analogue Renishaw	Short Desig.	DK	ML1 ML	DG D	L	DS1 DS	EAL B	Weight g
1	GI M4 000 09 033	A-5003-4689	-			9,0	33,0			9,8

Thread M4
Material Stainless steel

Special designs on request.

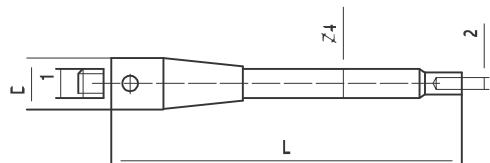


Threaded adapter/extension

Pos.	itp Order No	analogue Renishaw	Short Desig.	DK	ML1 ML	DG D	L	DS1 DS	G1 G2	Weight g
1	RI M4 300 07 020	M-5000-6625	SE 21			7,0	20,0		M4/M3	3,2

Thread M4
Material Stainless steel

Special designs on request.

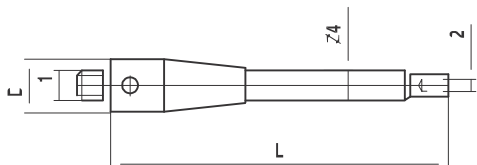


Threaded adapter/extension

Pos.	itp Order No	analogue Renishaw	Short Desig.	DK	ML1 ML	DG D	L	DS1 DS	G1 G2	Weight g
1	RK M4 300 07 050	A-5000-7751	SE 22			7,0	50,0		M4/M3	4,4
2	RK M4 300 07 075	A-5000-7752	SE 23			7,0	75,0		M4/M3	5,2
3	RK M4 300 07 100	A-5000-7753	SE 24			7,0	100,0		M4/M3	6,3

Material Stainless steel base, ceramic stem

Special designs on request.

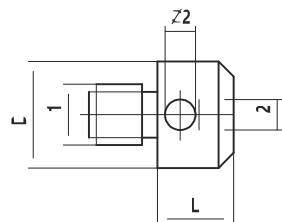


Adapter

Pos.	itp Order No	analogue Renishaw	Short Desig.	DK	ML1 ML	DG D	L	DS1 DS	G1 G2	Weight g
1	RI M4 000 07 005	M-5000-6622	SA5			7,0	5,0		M4/M2	1,5
2	RI M4 000 07 009	M-5000-6714	SA6			7,0	9,0		M4/M3	1,4
3	RT M4 500 11 010	A-5555-0228	-			11,0	10,0		M4/M5	5,2
4	RI M4 300 07 018	M-5000-8167	-			7,0	18,0		M4x0,5/M3	1,9

Thread M4
Material Stainless steel

Special designs on request. RI M4 300 07 018 for Dea TF6.



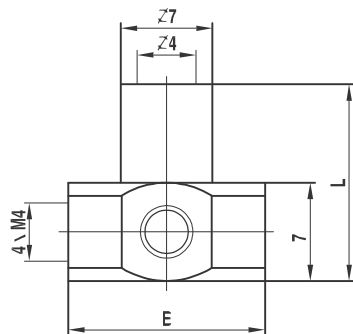
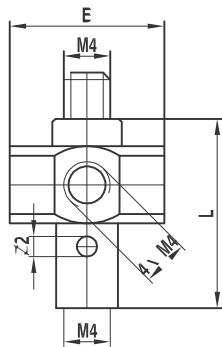
5-way holder, rotary

Pos.	itp Order No	analogue Renishaw	Short Desig.	DK	ML1 ML	DG D	L	DS1 DS	EAL B	Weight g
1	HI M4 000 15 018	A-5000-7792	-				18,0		15,0	12,5
2	HI M4 000 15 015*	M-5000-6460	-				15,0		15,0	10,0

Thread M4
Material Stainless steel

Special designs on request.

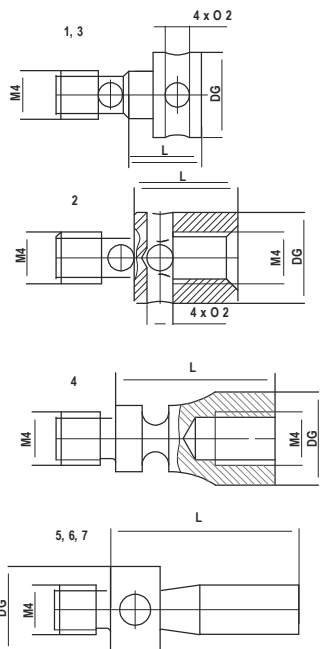
*Suitable only with TK M4 060 S7 053 & TK M4 060 S7 103.



Crash protection device

Pos.	itp Order No	analogue Renishaw	Short Desig.	DK	ML1 ML	DG D	L	DS1 DS	EAL B	Weight g
1	BI M4 000 07 006	M-5000-7587	-			7,0	6,0			1,4
2	BI M4 000 07 008	M-5000-7582	SA-8			7,0	8,0			1,8
3	BI M4 000 07 010	M-5000-7588	-			7,0	10,0			1,5
4	BI M4 000 07 012	M-2085-0069	-			7,0	12,0			2,7
5	BI M4 000 07 015	A-5003-0661	-			7,0	15,2			4,6
6	BI M4 000 07 009	M-2197-0156	-			7,0	9,0			1,5
7	BI M4 000 R7 016	M-2197-0150	-			7,0	16,0			2,1

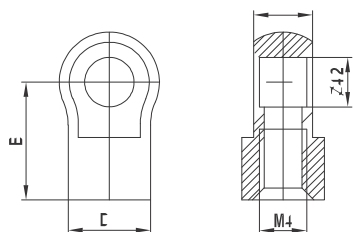
Special designs on request.



Swivel adapter

Pos.	itp Order No	analogue Renishaw	Short Desig.	DK	ML1 ML	DG D	L	DS1 DS	EAL B	Weight g
1	RI M4 000 07 014	M-5000-7591	-			7,0	14,25		10,0	2,8
2	RI M4 000 07 018	M-5000-7592	-			7,0	17,75		13,5	3,7

Special designs on request.



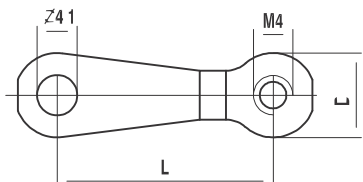
Stylus crank

Pos.	itp Order No	analogue Renishaw	Short Desig.	DK	ML1 ML	DG D	L	DS1 DS	EAL B	Weight g
1	RI M4 000 07 022	M-5000-7589	-			7,0	22,0			1,5
2	RI M4 000 07 028	M-5000-7590	-			7,0	28,0			1,8

Thread M4

Material Stainless steel

Special designs on request.


Pin-type wrench

Pos.	itp Order No	analogue Renishaw	Short Desig.	DK	ML1 ML	DG D	L	DS1 DS	EAL B	Weight g
1	MI MO 017 00 049	M-5000-3707	-			1,7	49,0			

Thread M4

Material Stainless steel

Special designs on request.

